

BIJLAGE 1: CIJFERS AMK

2009WMC67 bijlage

| | Meldingen | Afgesl. meldingen | Doorl. kal.dagen | Consulten | Gesl. consulten | Adviezen | Totaal nieuw |
|---------------|------------|-------------------|------------------|------------|-----------------|------------|--------------|
| januari | 61 | 42 | 78 | 62 | 54 | 182 | 305 |
| februari | 94 | 63 | 75 | 64 | 53 | 180 | 338 |
| maart | 84 | 93 | 91 | 61 | 57 | 177 | 322 |
| april | 67 | 93 | 76 | 64 | 63 | 192 | 323 |
| mei | | | | | | | |
| juni | | | | | | | |
| juli | | | | | | | |
| augustus | | | | | | | |
| september | | | | | | | |
| oktober | | | | | | | |
| november | | | | | | | |
| december | | | | | | | |
| TOTAAL | 306 | 291 | gem.2009: 83 | 251 | 227 | 731 | 1288 |

| 2008 | Meldingen |
|---------------|------------|
| januari | 59 |
| februari | 58 |
| maart | 74 |
| april | 63 |
| mei | 55 |
| juni | 76 |
| juli | 65 |
| augustus | 49 |
| september | 77 |
| oktober | 87 |
| november | 74 |
| december | 73 |
| TOTAAL | 810 |

| Consulten |
|------------|
| 59 |
| 58 |
| 80 |
| 60 |
| 51 |
| 70 |
| 65 |
| 40 |
| 61 |
| 75 |
| 85 |
| 36 |
| 740 |

| Adviezen | Totaal |
|-------------|-------------|
| 143 | 261 |
| 154 | 270 |
| 143 | 297 |
| 165 | 288 |
| 142 | 248 |
| 170 | 316 |
| 183 | 313 |
| 104 | 193 |
| 158 | 296 |
| 140 | 302 |
| 223 | 382 |
| 171 | 280 |
| 1896 | 3446 |

| 2007 | Meldingen |
|-----------|-----------|
| januari | 60 |
| februari | 49 |
| maart | 61 |
| april | 56 |
| mei | 64 |
| juni | 44 |
| juli | 74 |
| augustus | 47 |
| september | 53 |
| oktober | 62 |
| november | 77 |

| Consulten |
|-----------|
| 54 |
| 72 |
| 77 |
| 44 |
| 46 |
| 63 |
| 90 |
| 53 |
| 56 |
| 61 |
| 80 |

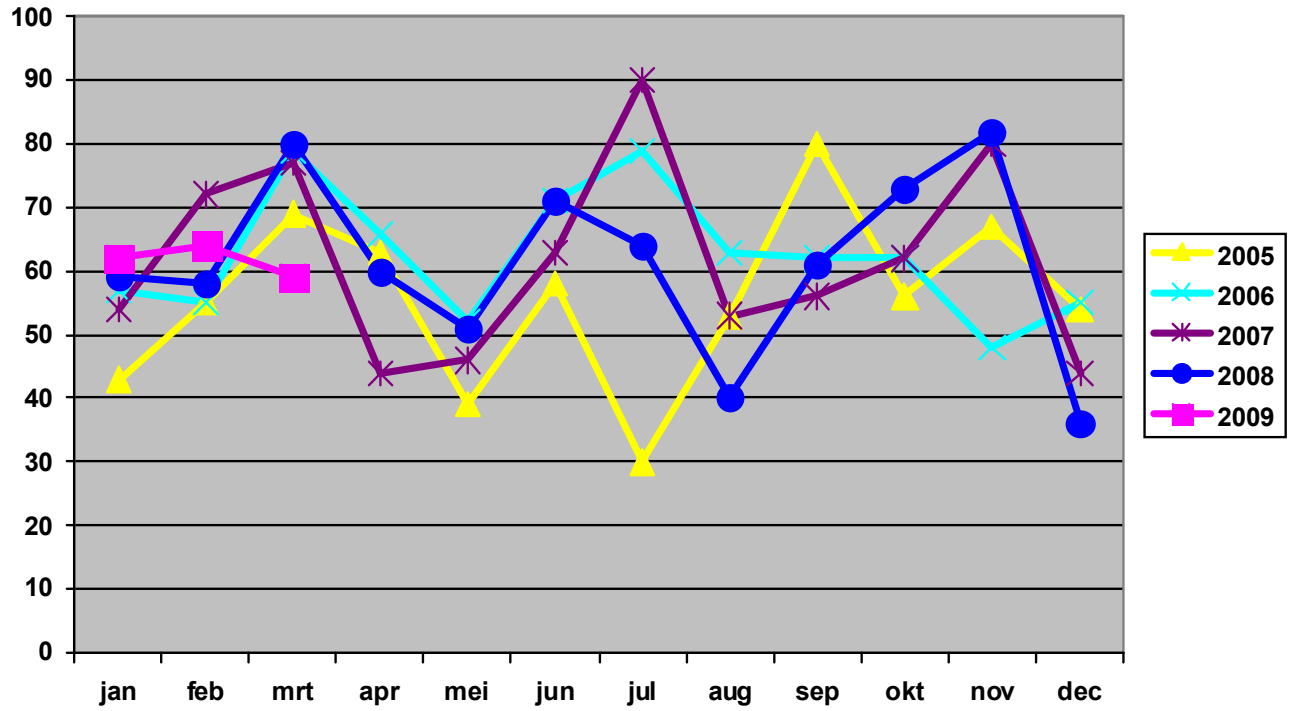
| Adviezen | Totaal |
|------------|------------|
| 158 | 272 |
| 148 | 269 |
| 171 | 309 |
| 237 | 337 |
| 124 | 234 |
| 151 | 258 |
| 219 | 383 |
| 121 | 221 |
| 119 | 228 |
| 143 | 266 |
| 168 | 325 |

| | |
|-----------------|------------|
| december | 39 |
| TOTAAL | 686 |

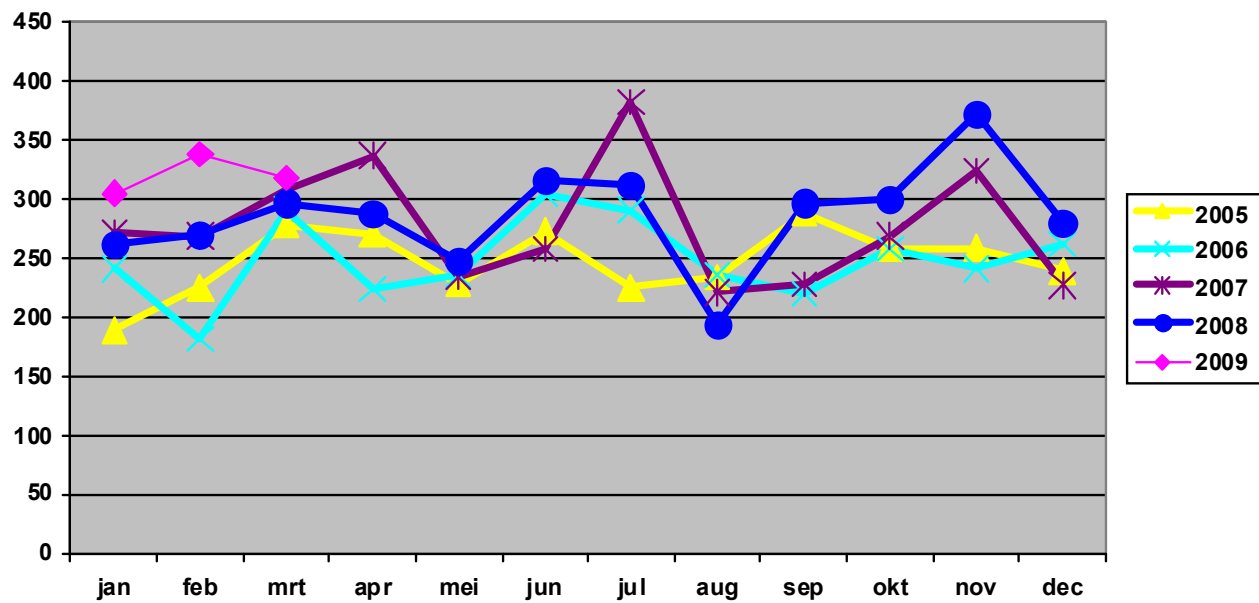
| |
|------------|
| 44 |
| 740 |

| | |
|-------------|-------------|
| 143 | 227 |
| 1902 | 3329 |

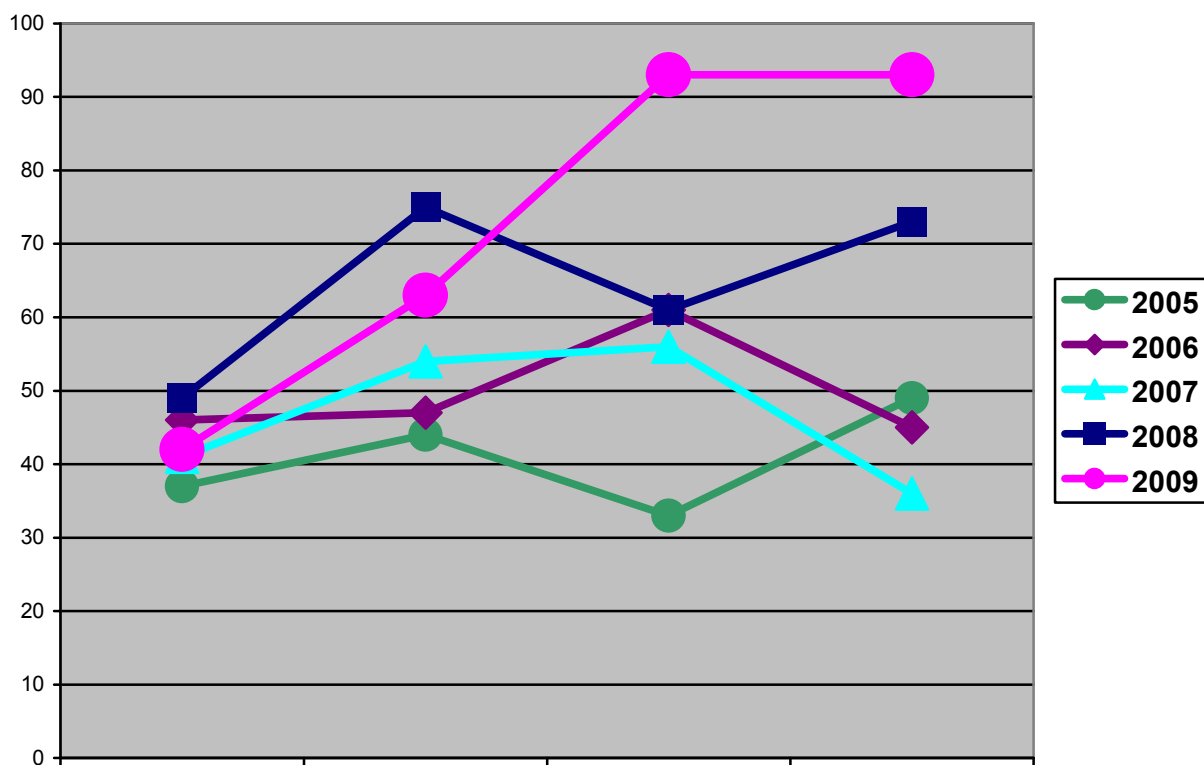
Trendoverzicht gemelde consulten per maand vanaf 2005



Trendoverzicht totaal (meldingen + consulten + adviezen) per maand vanaf 2005



AANTAL GESLOTEN MELDINGEN PER MAAND

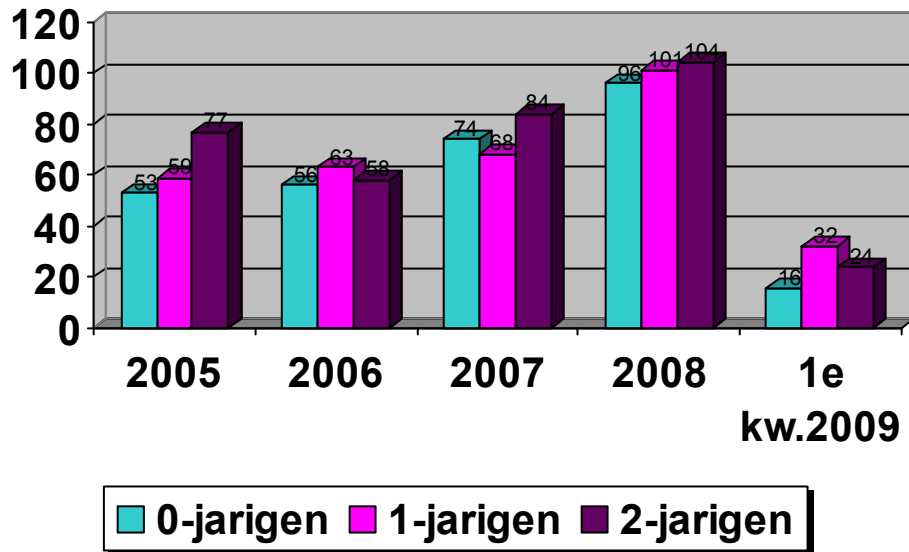


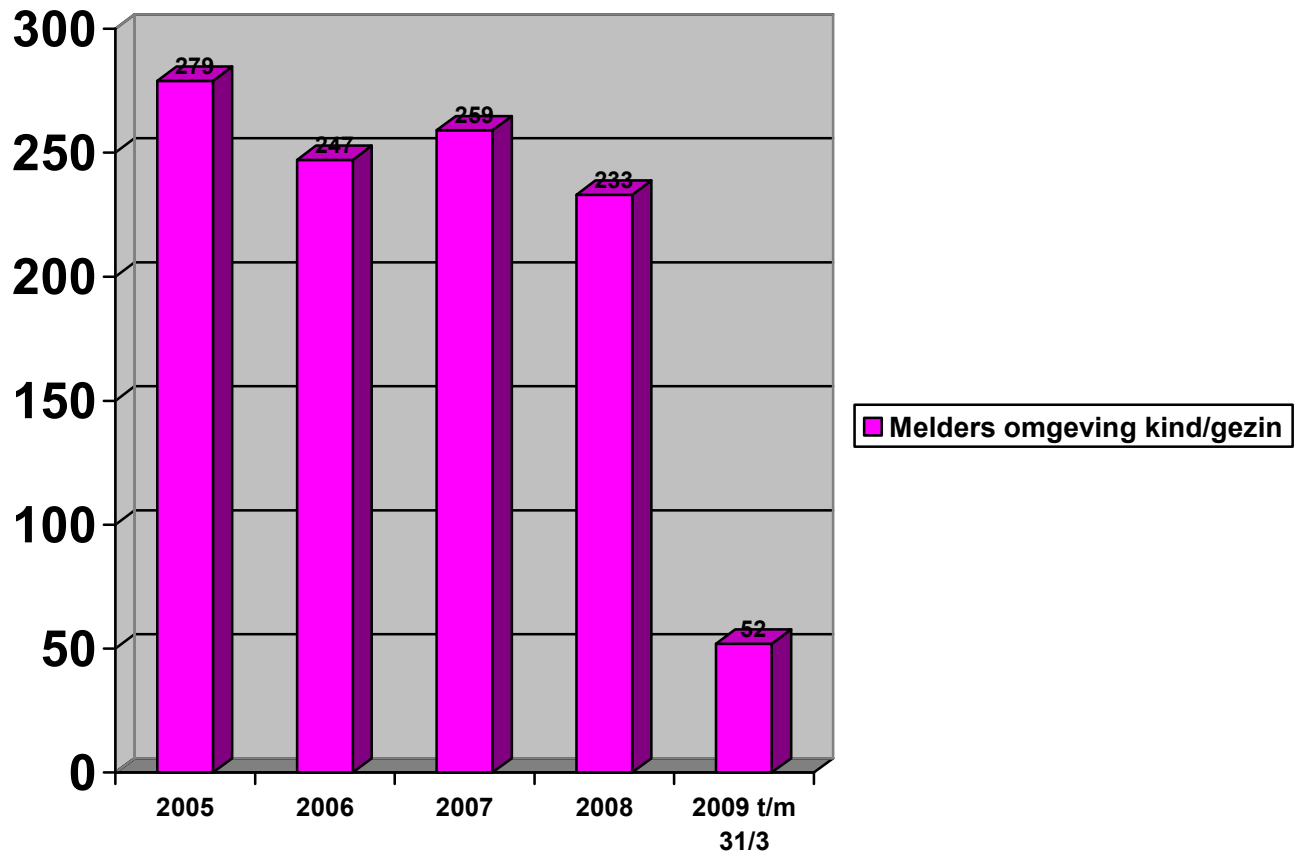
| | januari | februari | maart | april |
|------|---------|----------|-------|-------|
| 2005 | 37 | 44 | 33 | 49 |
| 2006 | 46 | 47 | 61 | 45 |
| 2007 | 41 | 54 | 56 | 36 |
| 2008 | 49 | 75 | 61 | 73 |
| 2009 | 42 | 63 | 93 | 93 |

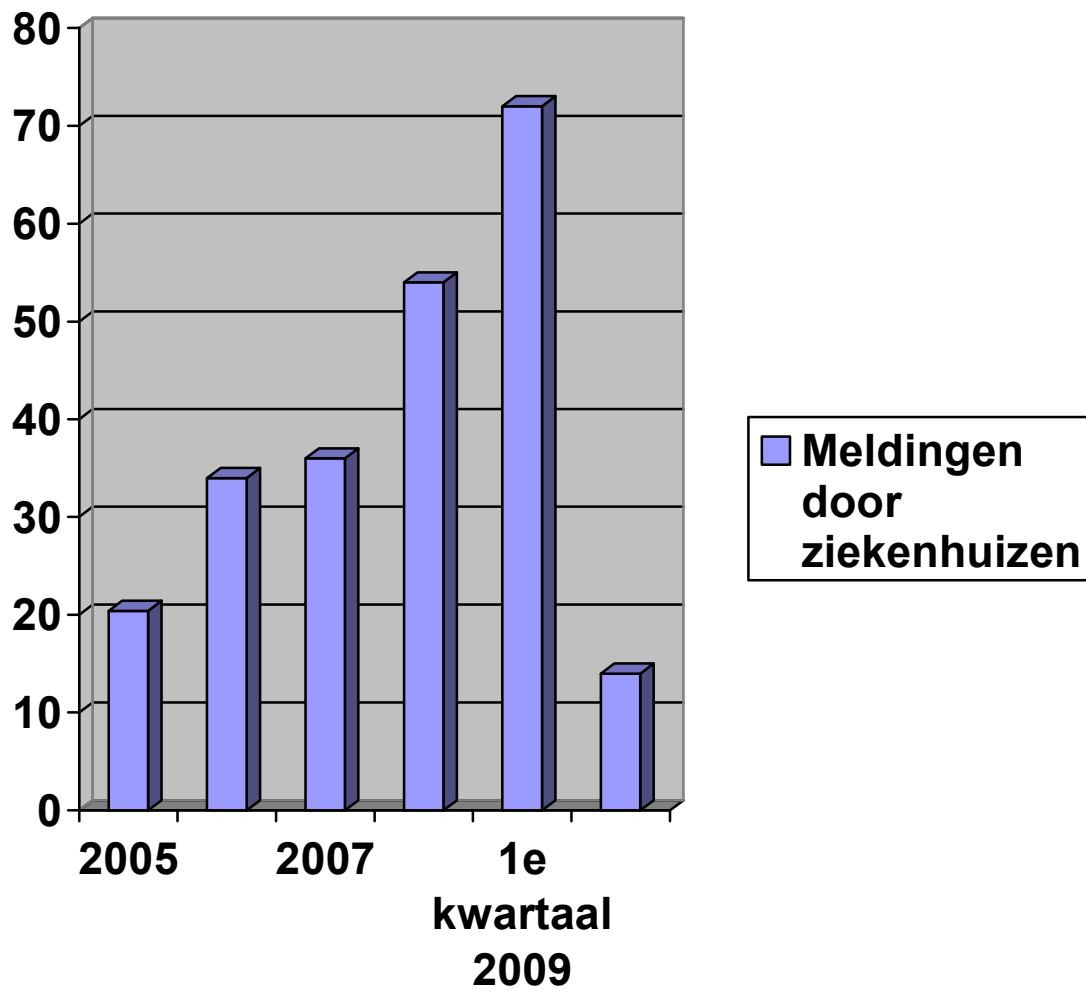
OVERZICHT PER (GROTE) GEMEENTE VAN HET AANTAL GEMELDE KINDEREN

| GEMEENTE | 2005 | 2006 | 2007 | 2008 | 2009 31/3 |
|----------------------------|-------------|-------------|-------------|-------------|---------------------|
| Amersfoort | 176 | 159 | 176 | 192 | 51 |
| Baarn | 20 | 9 | 31 | 16 | 5 |
| Bunschoten | 19 | 17 | 13 | 12 | 6 |
| De Bilt | 18 | 13 | 20 | 29 | 5 |
| De Ronde Venen | 16 | 16 | 31 | 36 | 8 |
| Houten | 27 | 40 | 33 | 45 | 5 |
| IJsselstein | 32 | 34 | 23 | 33 | 7 |
| Leusden | 8 | 11 | 22 | 24 | 4 |
| Lopik | 13 | 15 | 17 | 13 | 0 |
| Maarsssen | 27 | 29 | 26 | 45 | 18 |
| Montfoort | 11 | 13 | 10 | 23 | 7 |
| Nieuwegein | 41 | 41 | 67 | 57 | 19 |
| Rhenen | 3 | 5 | 13 | 20 | 2 |
| Soest | 45 | 42 | 32 | 38 | 12 |
| Utrecht | 231 | 205 | 298 | 348 | 124 |
| Utrechtse Heuvelrug | 32 | 27 | 43 | 31 | 6 |
| Veenendaal | 44 | 21 | 52 | 102 | 11 |
| Vianen | 12 | 23 | 28 | 24 | 5 |
| Wijk bij Duurstede | 18 | 9 | 9 | 15 | 7 |
| Woerden | 32 | 29 | 15 | 49 | 18 |
| Zeist | 67 | 34 | 60 | 50 | 21 |

Meldingen van kinderen van (-)0 t/m 2 jaar







OVERZICHT BELANGRIJKSTE MELDENDE INSTANTIES:

| Instantie | 2005 | 2006 | 2007 | 2008 | 2009 t/m 31/3 |
|--|-------------|-------------|-------------|-------------|--------------------------|
| AMK¹ | 19 | 41 | 37 | 42 | 22 |
| AMW | 10 | 14 | 27 | 37 | 10 |
| Bureau Jeugdzorg | 20 | 27 | 42 | 39 | 10 |
| Consultatiebureaus | 15 | 9 | 11 | 13 | 2 |
| Huisarts | 12 | 5 | 18 | 25 | 6 |
| Politie | 80 | 49 | 81 | 129 | 54 |
| Scholen | 62 | 46 | 49 | 68 | 26 |
| Vrouwenopvang/ Blijf van m'n Lijf | 18 | 17 | 13 | 11 | 3 |
| Ziekenhuizen | 34 | 36 | 54 | 72 | 14 |

¹ Melding door een ander AMK of hermelding a.g.v. rappel